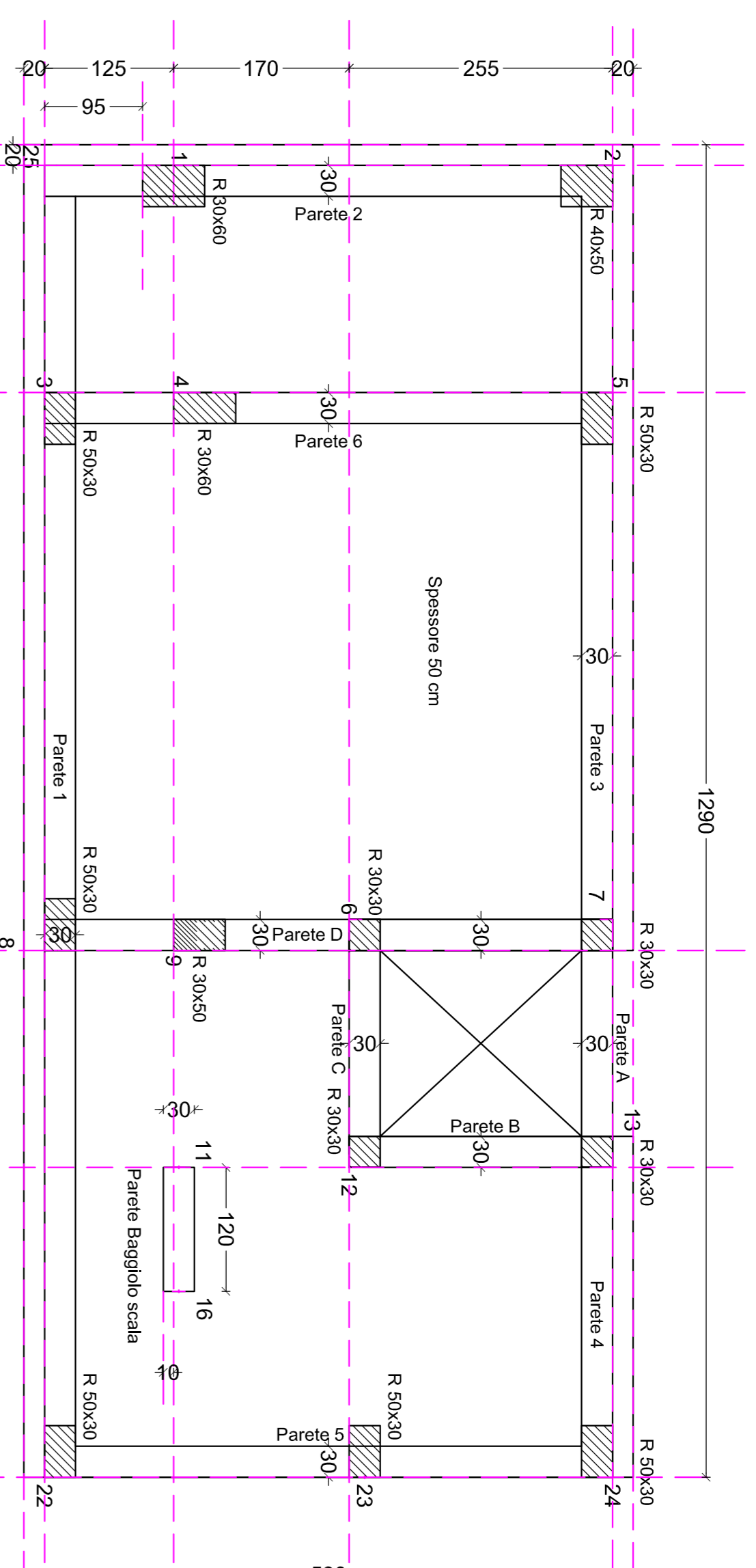


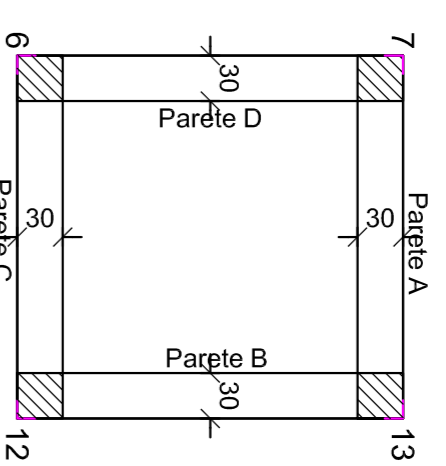
PIANO SOLETTA EDIFICIO

Quota 0,90



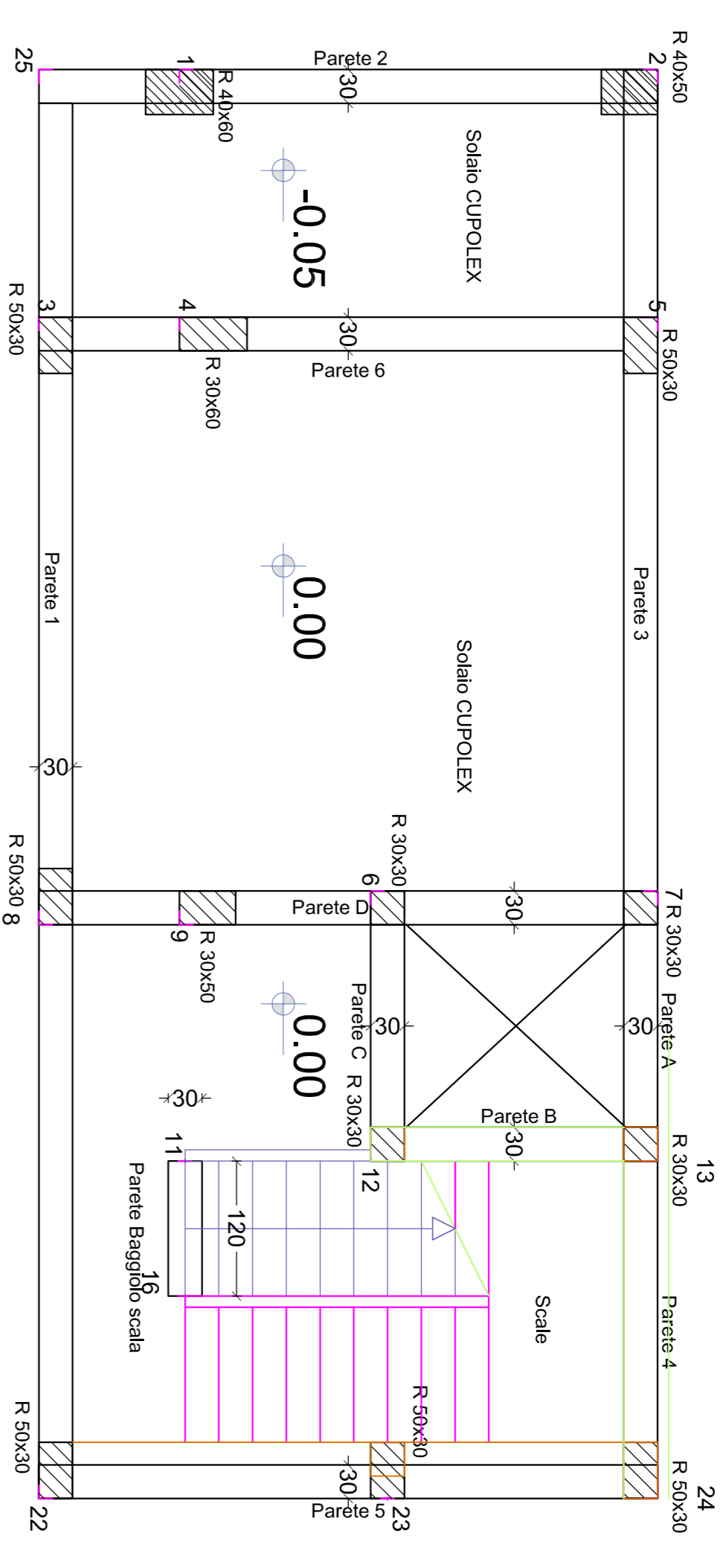
PIANO SOLETTA EXTRACORSA INFERIORE

Quota 0,00



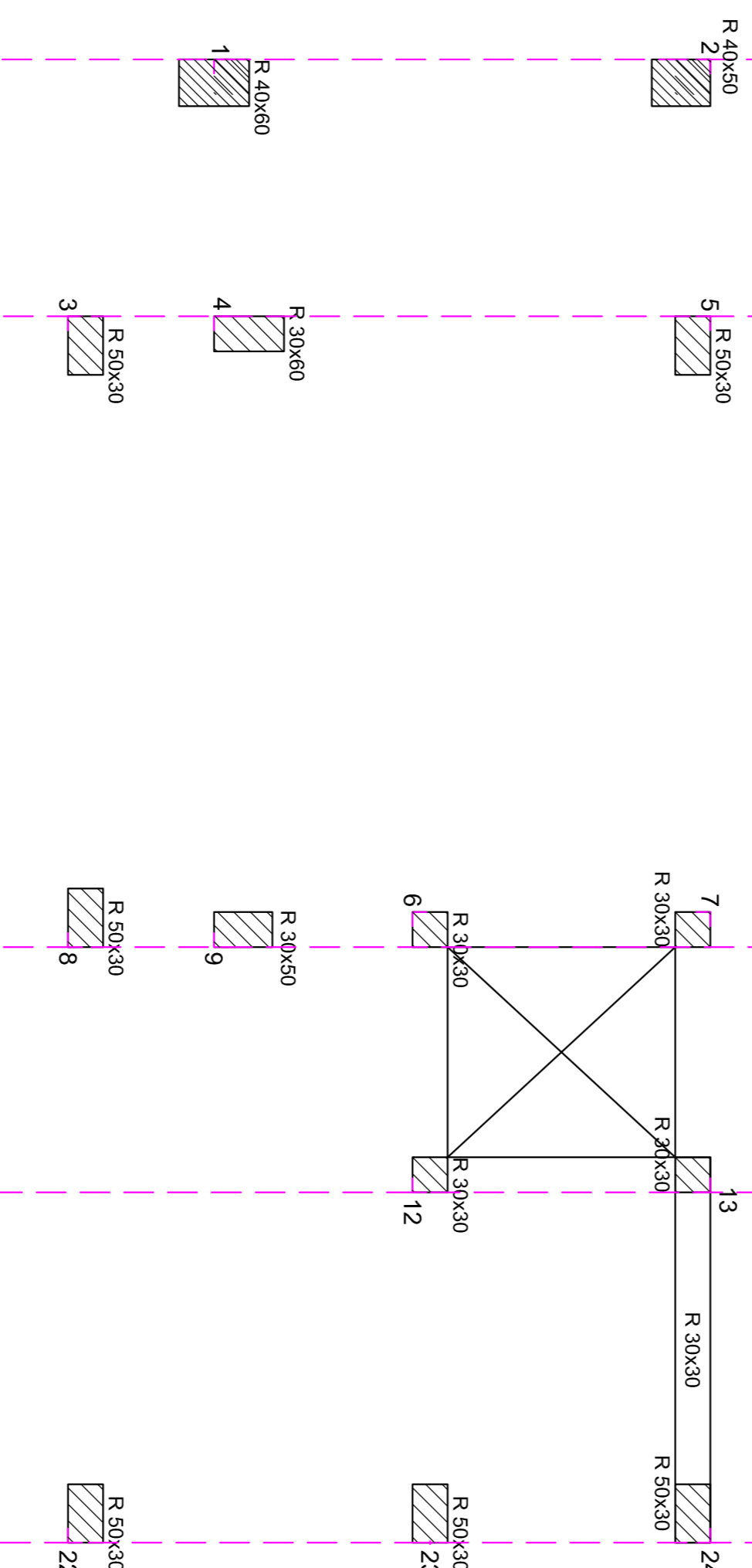
PIANO TERRA

Quota 1,50



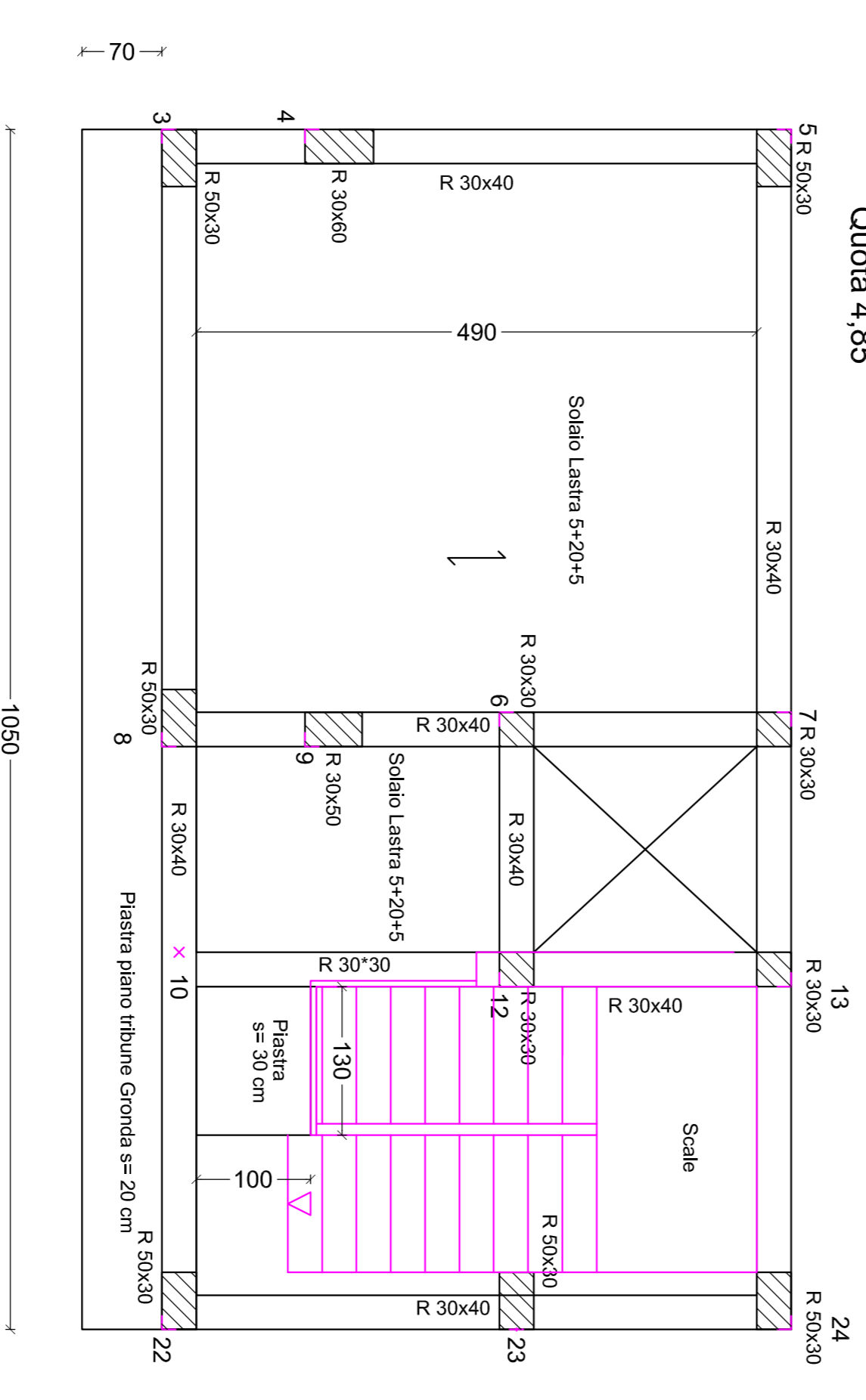
PIANO INTERMEDIO SCALE

Quota 3,25



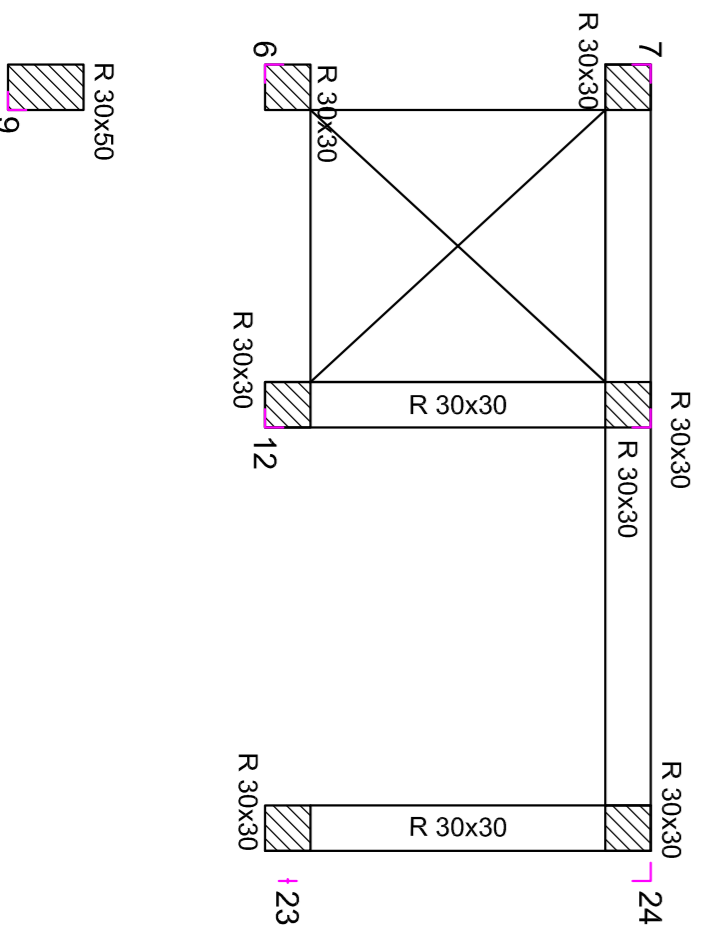
PIANO TRIBUNE

Quota 4,85



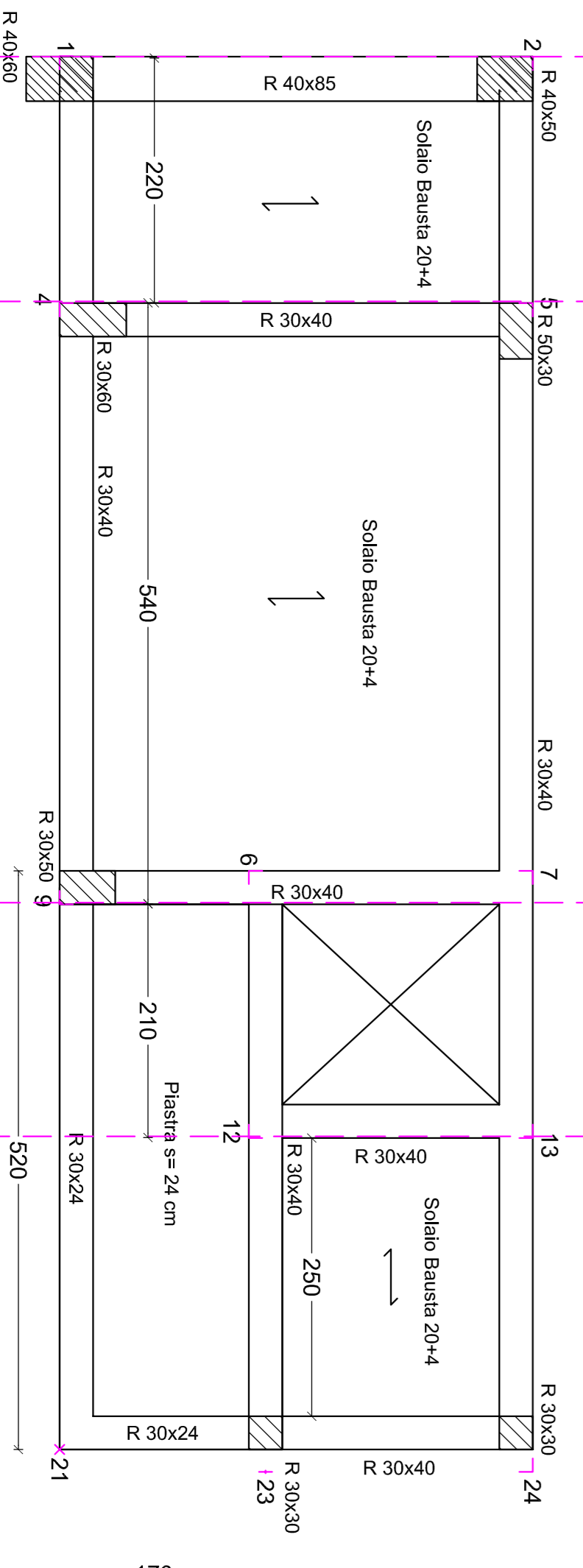
PIANO ROMPIRATTA MURATURA

Quota 7,30



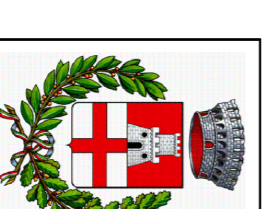
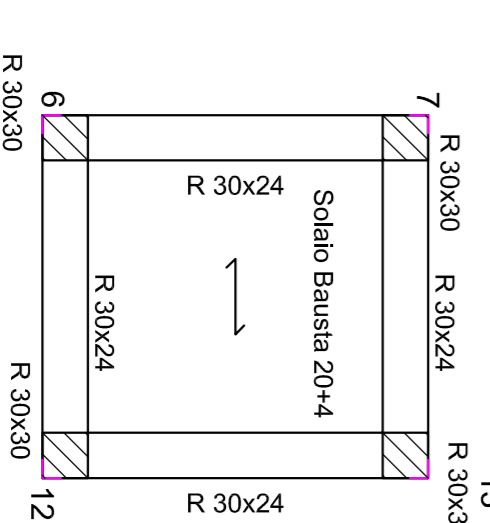
PIANO COPERTURA (FALDA)

Quota da 6,97 a 8,84



PIANO EXTRACORSA SUPERIORE

Quota 9,14



**COMMITTENTE**  
Comune di Pontassieve

LOCALITA'  
Pontassieve (FI)

SCALA DI STAMPA  
1/50

TAVOLA:  
3/27

PROGETTO STRUTTURALE DI TRIBUNE PER  
LO STADIO DI PONTASSIEVE  
Edificio Biglietteria

PROGETTISTA  
Ing. Vincenzo Mannuccini

DIRETTORE DEI LAVORI  
Ing. Vincenzo Mannuccini

TUTTE LE MISURE DOVRANNO ESSERE VERIFICATE PREVENTIVAMENTE  
CON QUELLE DELL'ARCHITETTO PRIMA DELLA ESECUZIONE

**A10**