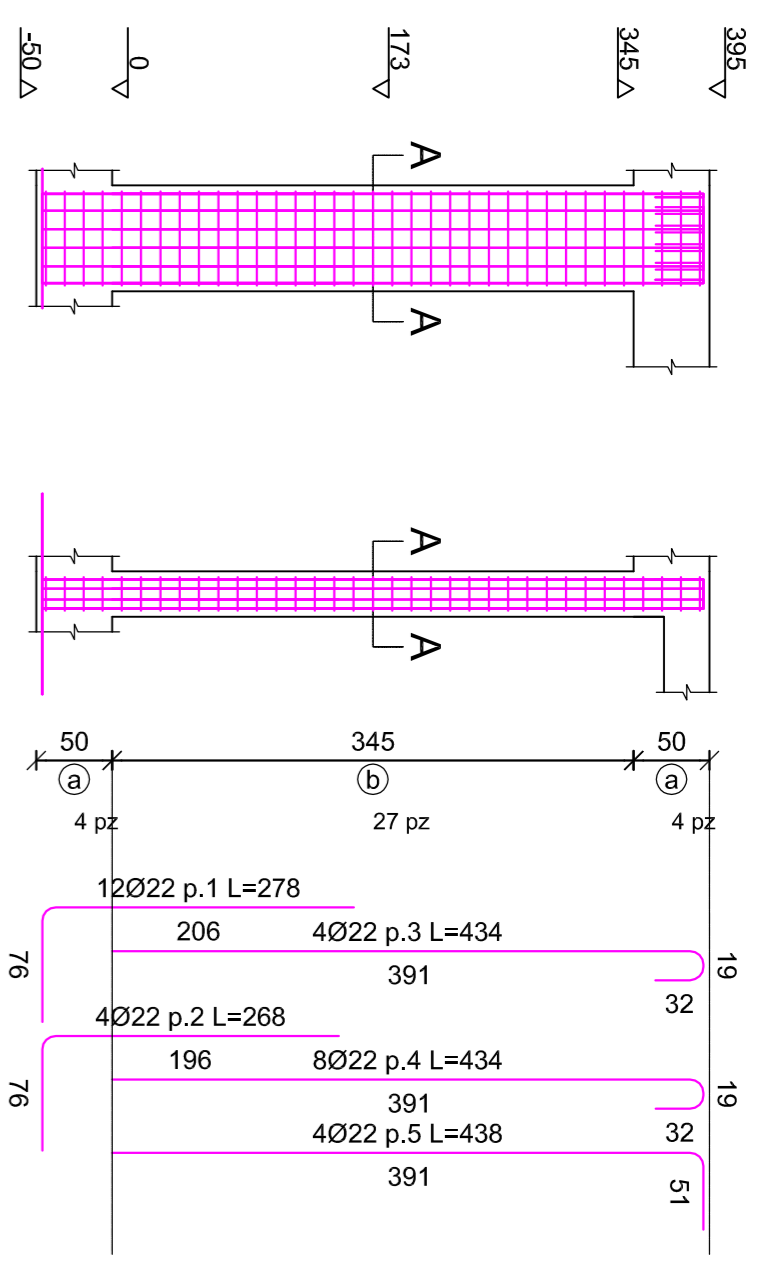
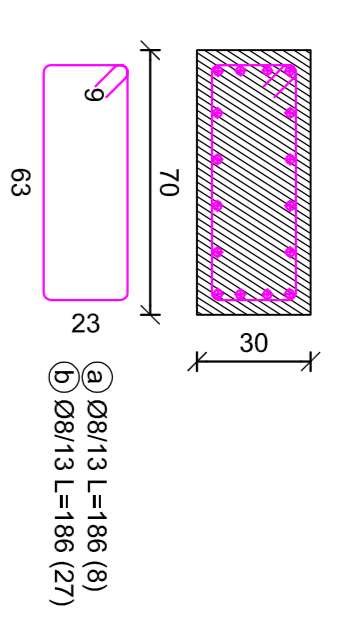


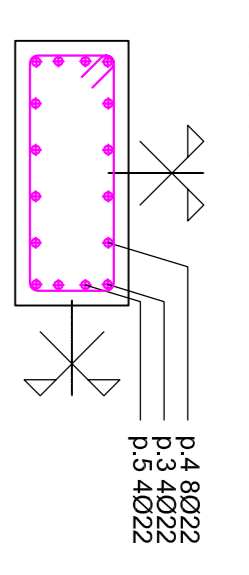
**Pilastrata 1**  
scala 1/50



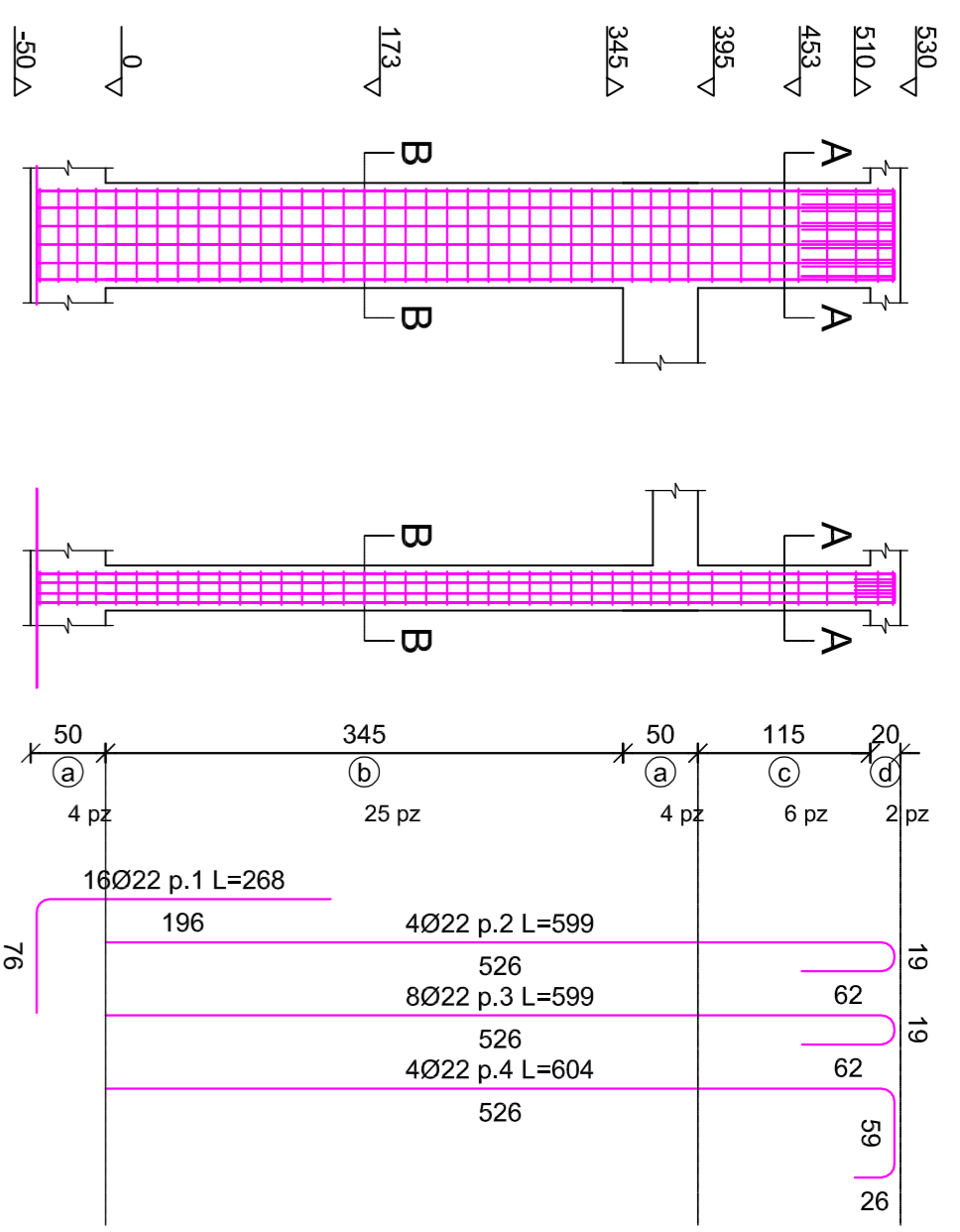
**Staffe tra le quote (-50;395)**  
scala 1/20



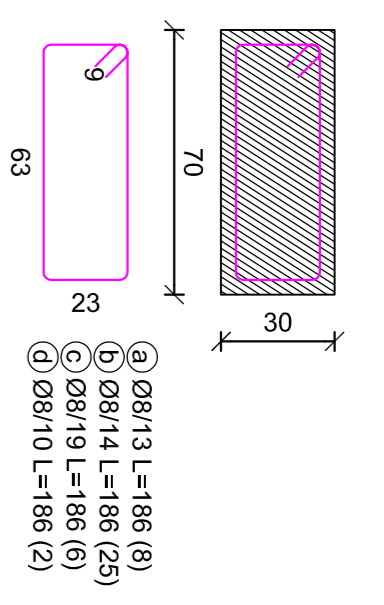
**Sezioni A-A**  
scala 1/20



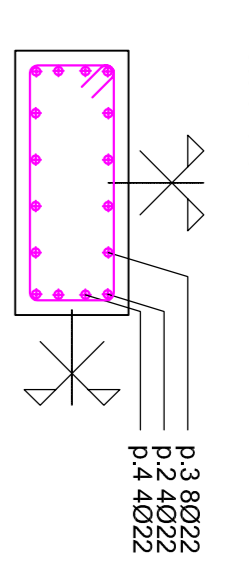
**Pilastrata 2**  
scala 1/50



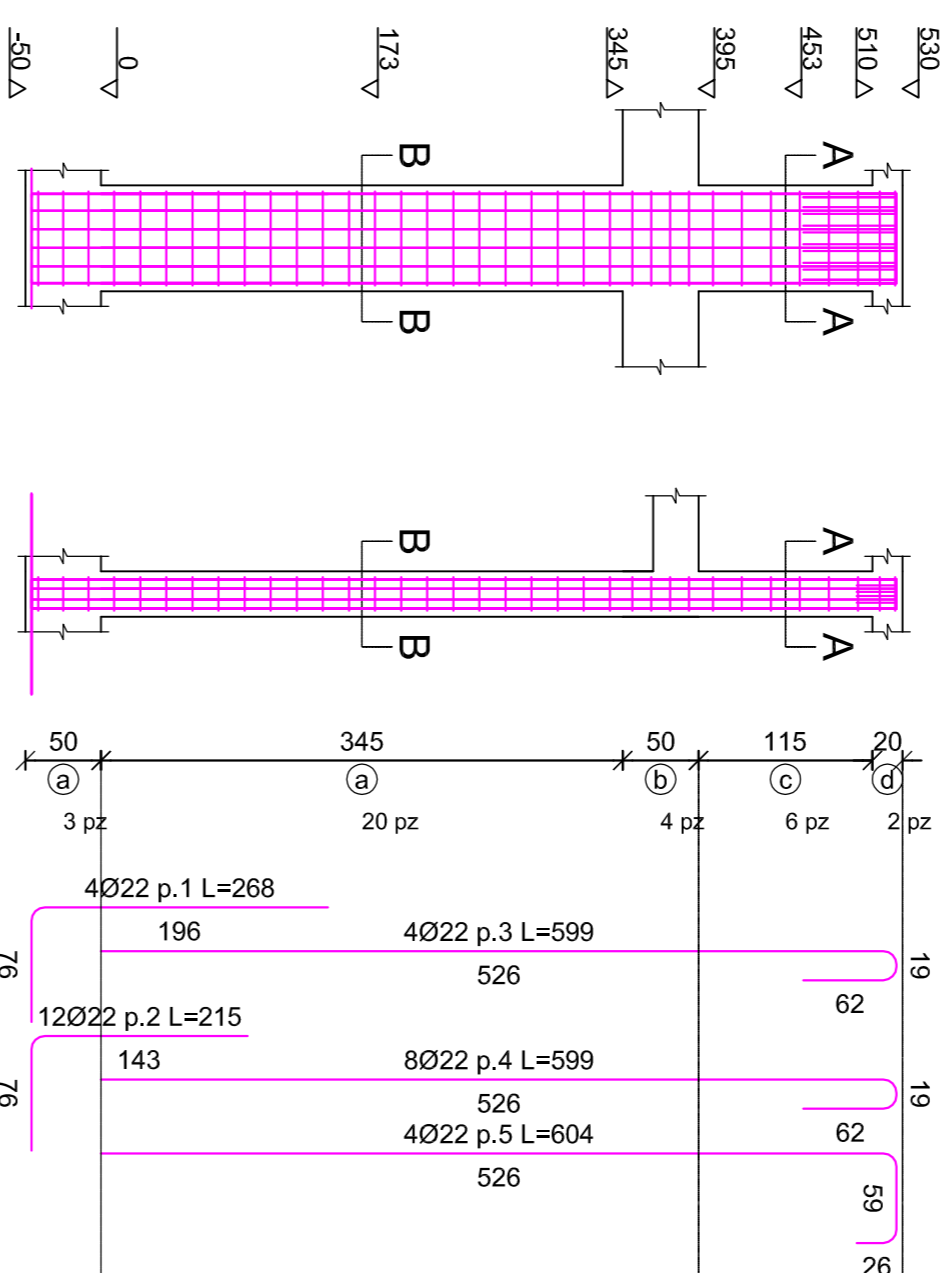
**Staffe tra le quote (-50;530)**  
scala 1/20



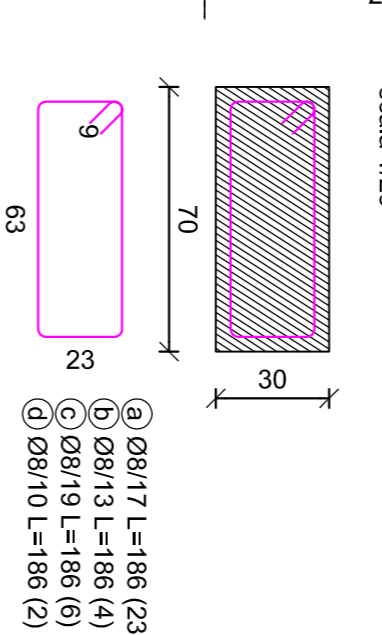
**Sezioni A-A-B**  
scala 1/20



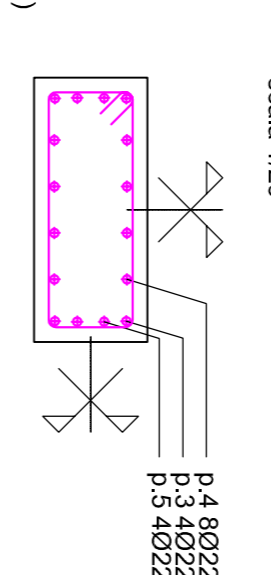
**Pilastrata 3**  
scala 1/50



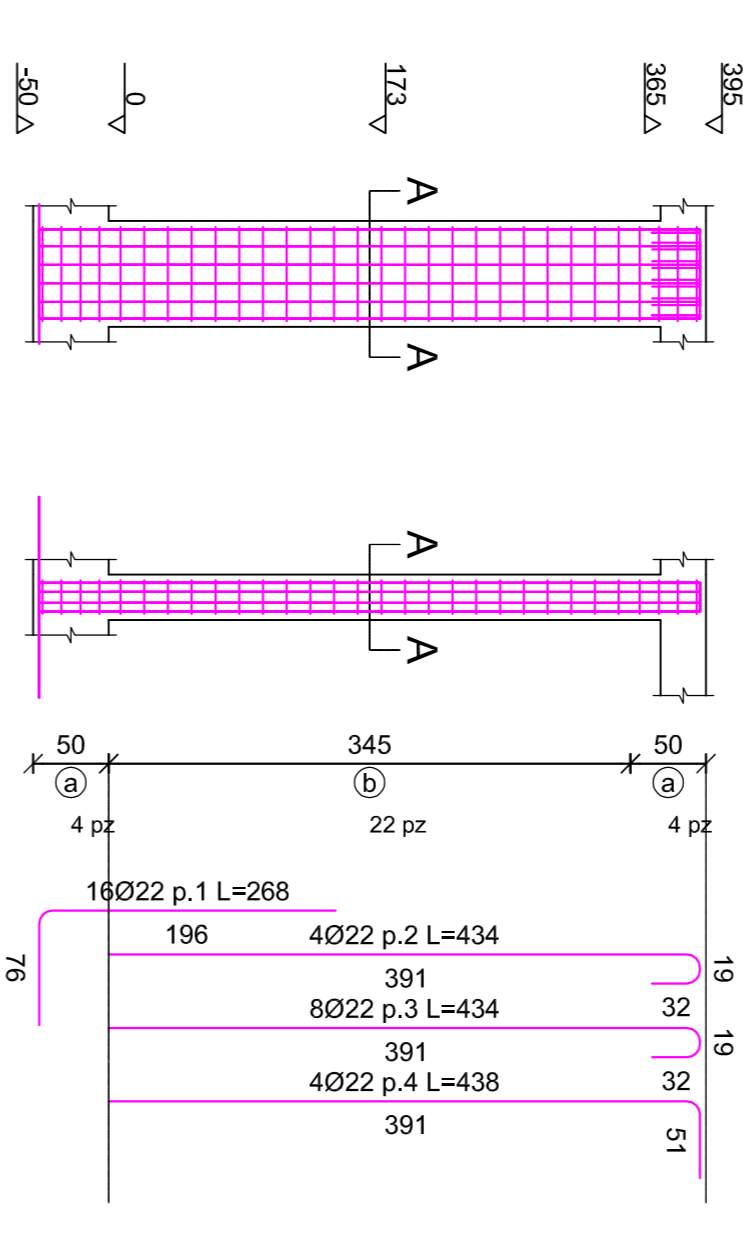
**Staffe tra le quote (-50;530)**  
scala 1/20



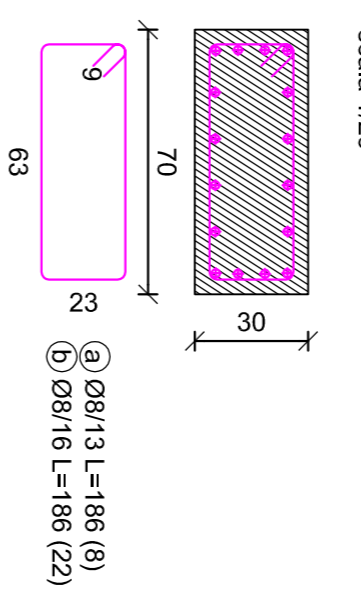
**Sezioni A-A-B-B**  
scala 1/20



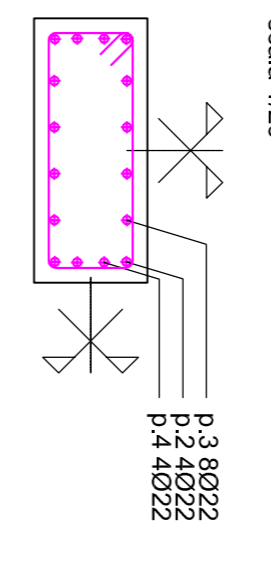
**Pilastrata 4**  
scala 1/50



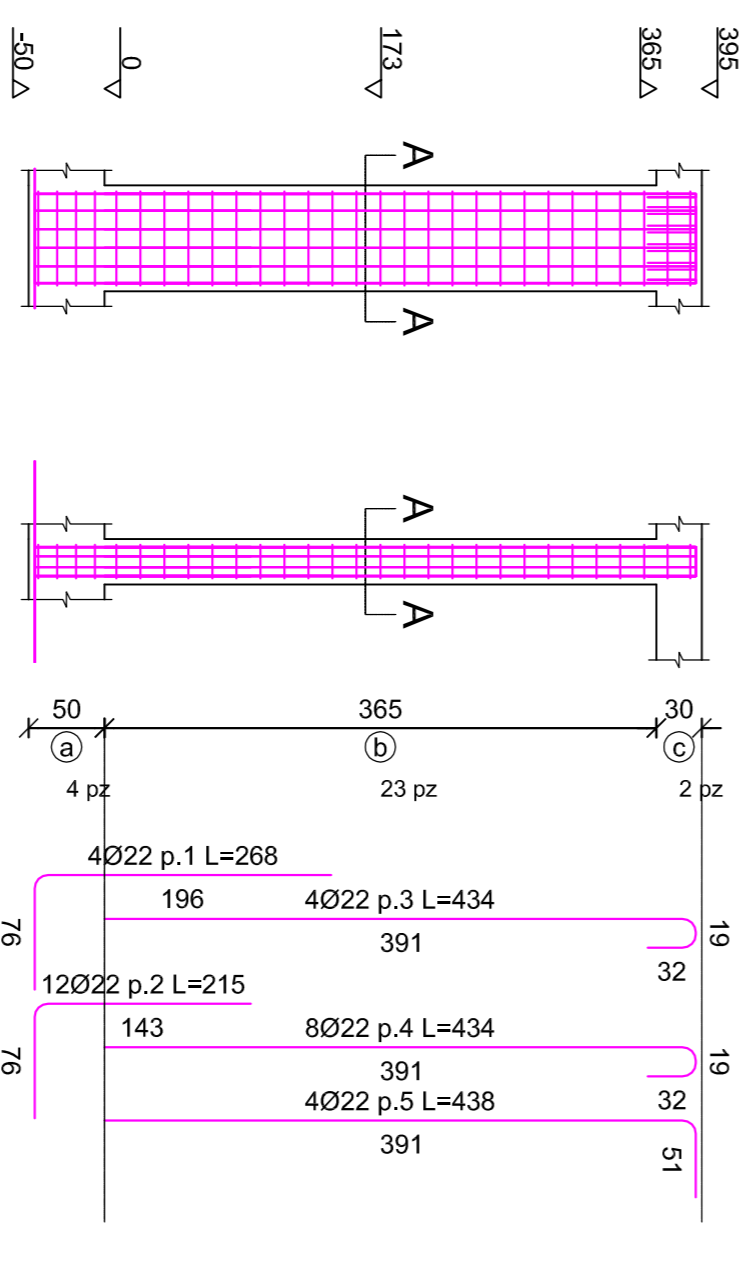
**Staffe tra le quote (-50;395)**  
scala 1/20



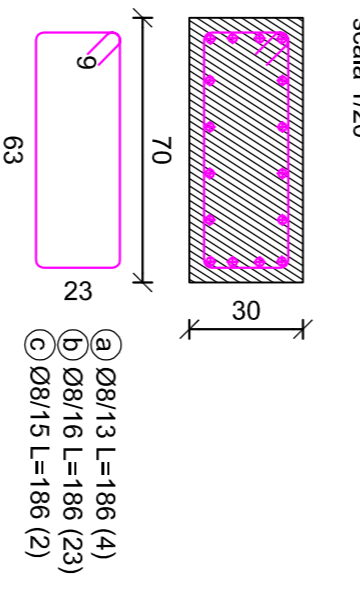
**Sezione A-A**  
scala 1/20



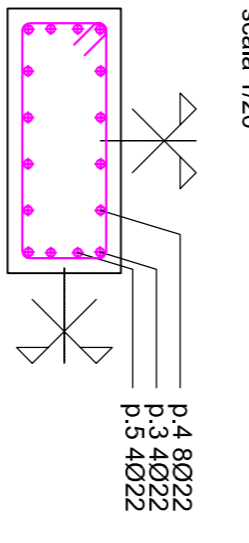
**Pilastrata 5**  
scala 1/50



**Staffe tra le quote (-50;395)**  
scala 1/20



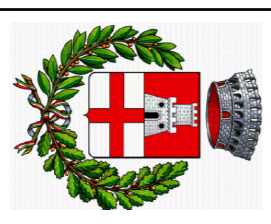
**Sezione A-A**  
scala 1/20



**SOLAIO PIANO TRIBUNE (stadio)**  
Tipo "Lastica" 5\*20+5, soletta di ripartizione  
p.p. strutturale 380 kg/mq + 800 kg/mq permanenti + 500 kg/mq variabili (affollamento) + s.c. 80 kg/mq variabili (neve)

**SOLAIO PIANO TERRA (tutto)**  
Tipo CUPOLEX, con soletta di ripartizione  
480 kg/mq permanenti + 500 kg/mq variabili (affollamento)

**CALCESTRUZZO MAGRONE: C 12/15**  
**CALCESTRUZZO ORDINARIO: C 25/30**  
**ACCIAIO PER ARMATURA: B 450C**  
Resine ad alta resistenza tipo HILTI HIT RE 500 o simili

		<b>PROGETTISTA</b> Ing. Vincenzo Mannuccchi	<b>DIRETTORE DEI LAVORI</b> Ing. Vincenzo Mannuccchi
<b>LOCALITÀ:</b> Pontassieve (FI)			
<b>SCALA DI STAMPA</b> 1/50		<b>PROGETTO PER LA REALIZZAZIONE</b>	
<b>TAVOLA:</b> 16/27	<b>DATA:</b> 05/2020	<b>PROGETTO STRUTTURALE DI TRIBUNE PER LO STADIO DI PONTASSIEVE</b> Tribuna 1	
TUTTE LE MISURE DOVRANNO ESSERE VERIFICATE PREVENTIVAMENTE CON QUELLE DELL'ARCHITETTONICO PRIMA DELLA ESECUZIONE			
			A10