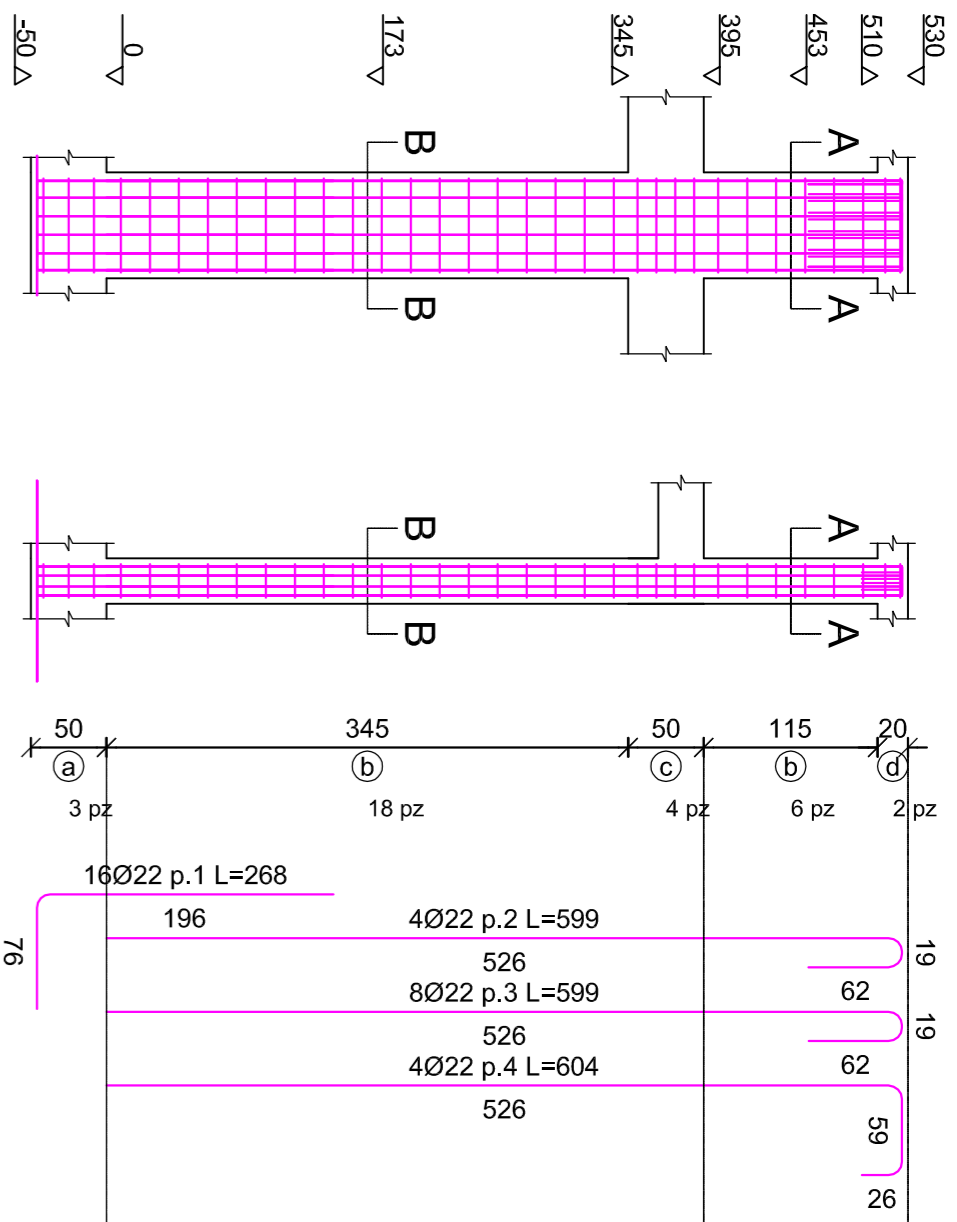


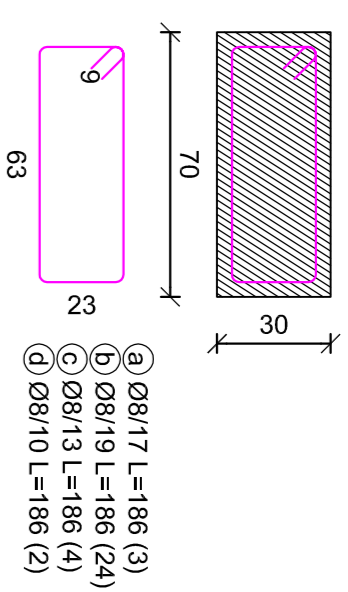
**Pilastrata 6**

scala 1/50



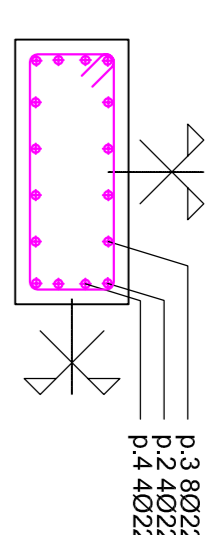
**Staffe tra le quote (-50;530)**

scala 1/20



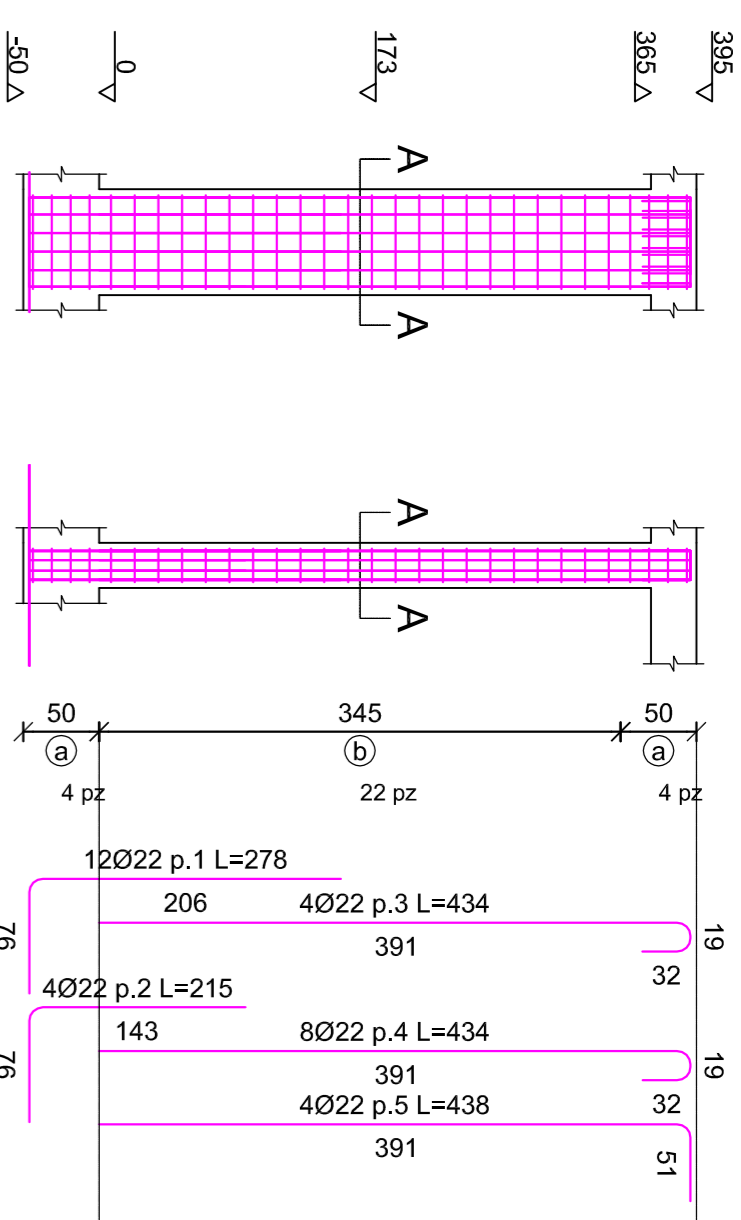
**Sezioni A-A,B-B**

scala 1/20



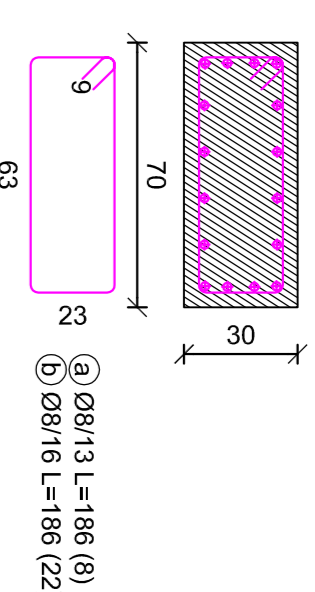
**Pilastrata 7**

scala 1/50



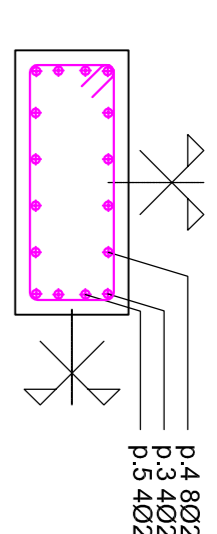
**Staffe tra le quote (-50;395)**

scala 1/20



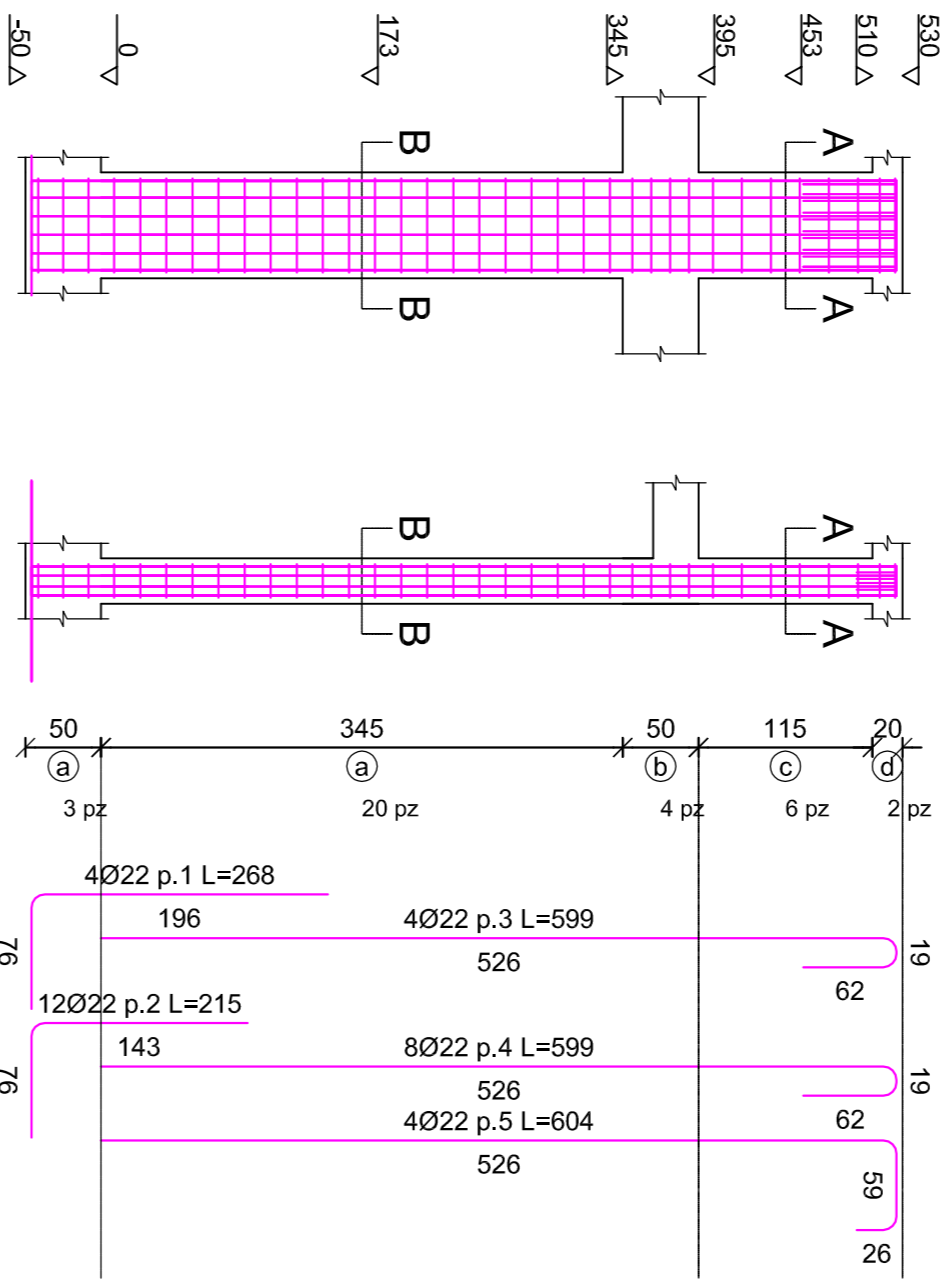
**Sezione A-A**

scala 1/20



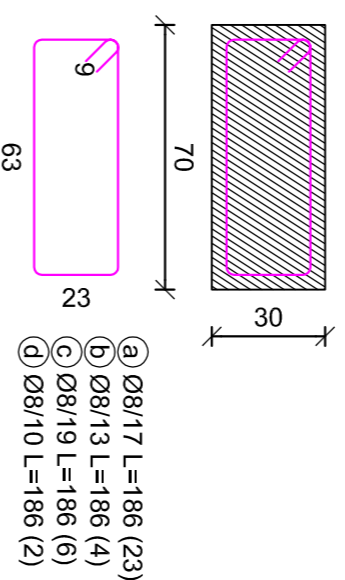
**Pilastrata 8**

scala 1/50



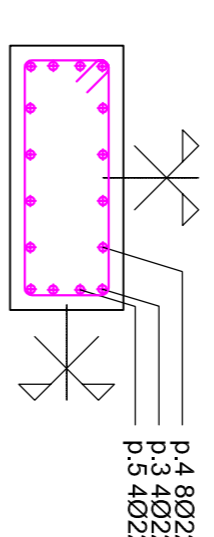
**Staffe tra le quote (-50;530)**

scala 1/20



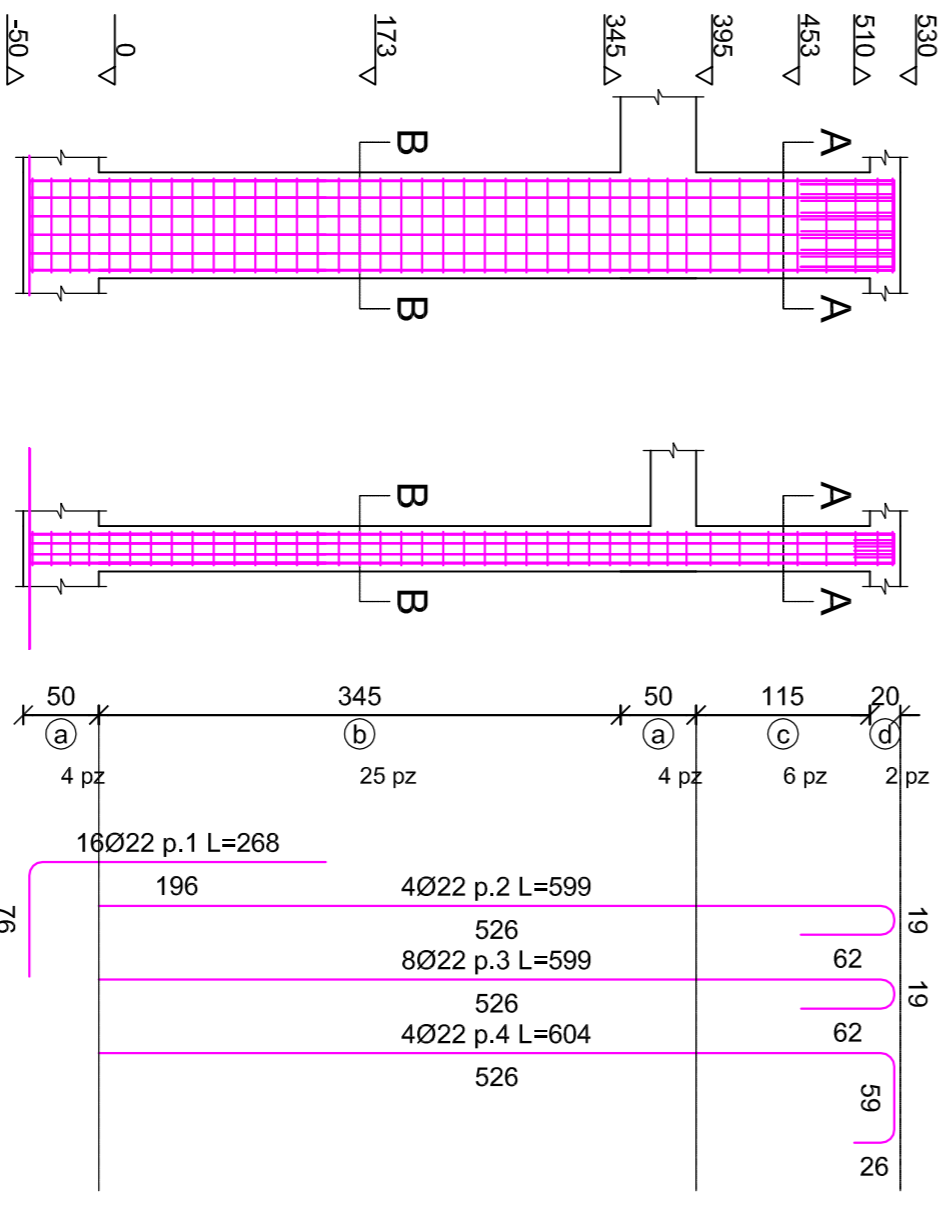
**Sezioni A-A,B-B**

scala 1/20



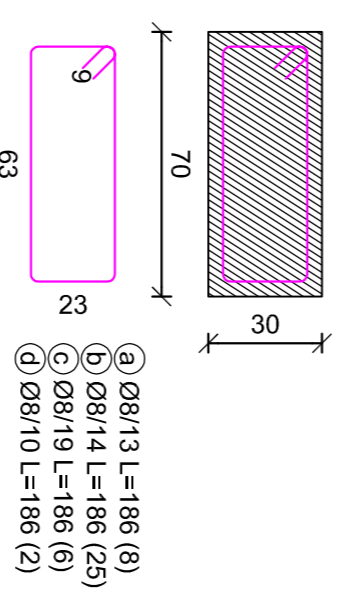
**Pilastrata 10**

scala 1/50



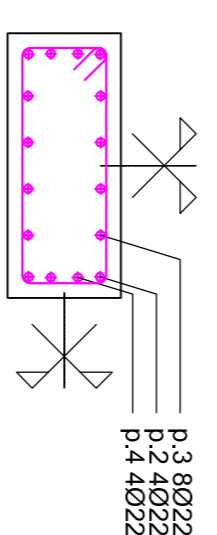
**Staffe tra le quote (-50;530)**

scala 1/20



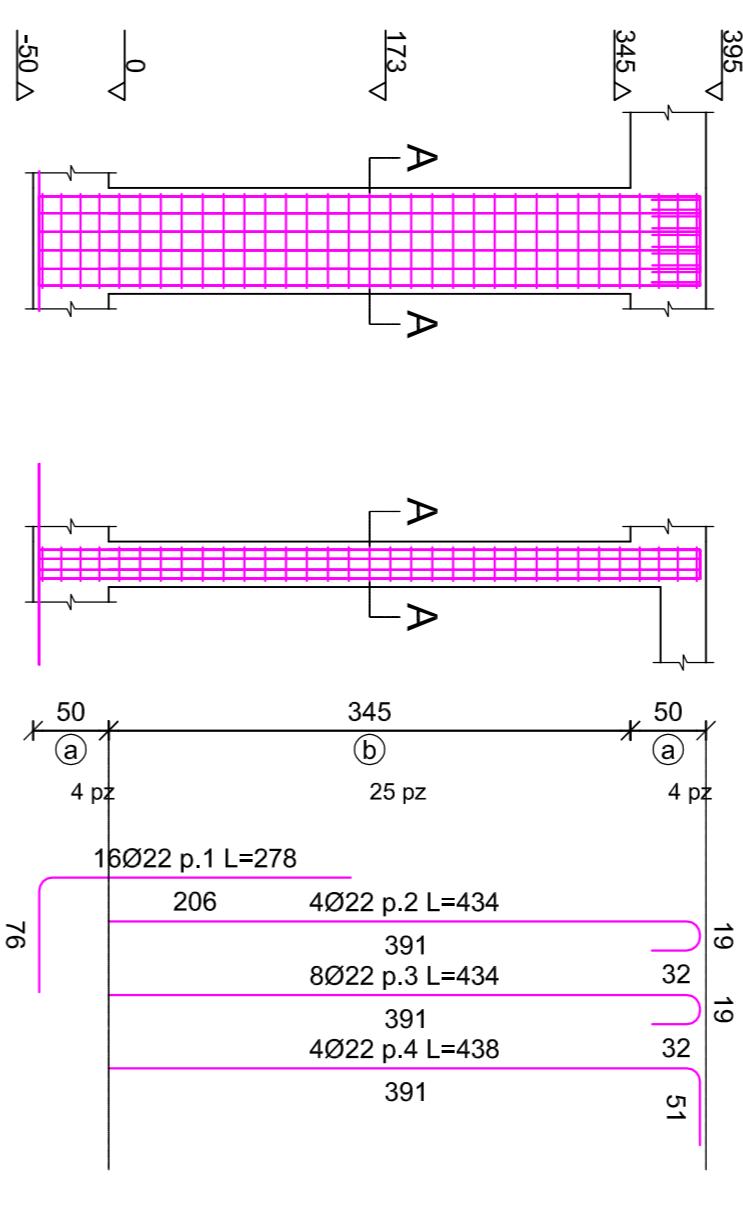
**Sezioni A-A,B-B**

scala 1/20



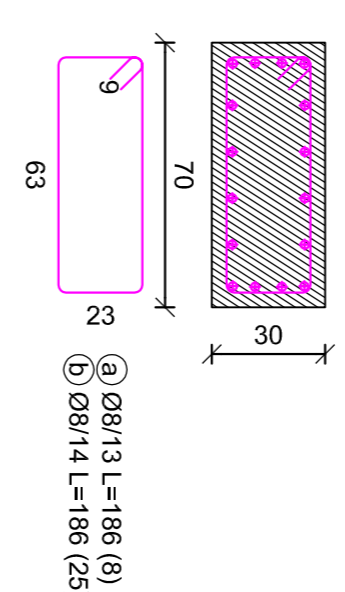
**Pilastrata 9**

scala 1/50



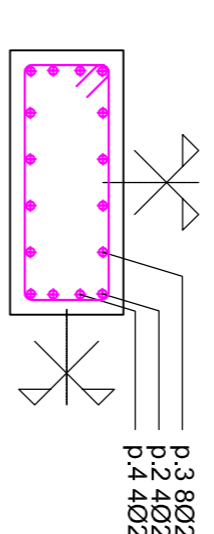
**Staffe tra le quote (-50;395)**

scala 1/20



**Sezione A-A**

scala 1/20



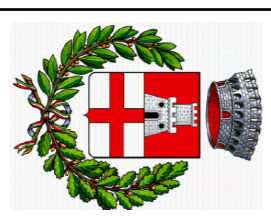
**SOLAIO PIANO TRIBUNE (stadio)**

Tipo "Lastica" 5x20x5, soletta di ripartizione p.p. strutturale 380 kg/mq + 800 kg/mq permanenti + 500 kg/mq variabili (affollamento) + s.c. 80 kg/mq variabili (neve)

**SOLAIO PIANO TERRA (tutto)**

Tipo CUPOLEX, con soletta di ripartizione 480 kg/mq permanenti + 500 kg/mq variabili (affollamento)

**CALCESTRUZZO MAGRONE: C 12/15**  
**CALCESTRUZZO ORDINARIO: C 25/30**  
**ACCIAIO PER ARMATURA: B 450C**  
 Resine ad alta resistenza tipo HILL TI HIT RE 500 o simili

		<b>PROGETTISTA</b> Ing. Vincenzo Mannuccini		<b>DIRETTORE DEI LAVORI</b> Ing. Vincenzo Mannuccini	
<b>COMMITTENTE</b>					
Comune di Pontassieve					
<b>LOCALITA'</b>					
Pontassieve (FI)					
<b>SCALA DI STAMPA</b>					
1/50					
<b>PROGETTO PER LA REALIZZAZIONE</b>					
<b>TAVOLA:</b>		<b>PROGETTO STRUTTURALE DI TRIBUNE PER</b>			
17/27		<b>LO STADIO DI PONTASSIEVE</b>			
		<b>Tribuna 1</b>			
TUTTE LE MISURE DOVRANNO ESSERE VERIFICATE PREVENTIVAMENTE CON QUELLE DELL'ARCHITETTO PRIMA DELLA ESECUZIONE					
<b>A10</b>					